

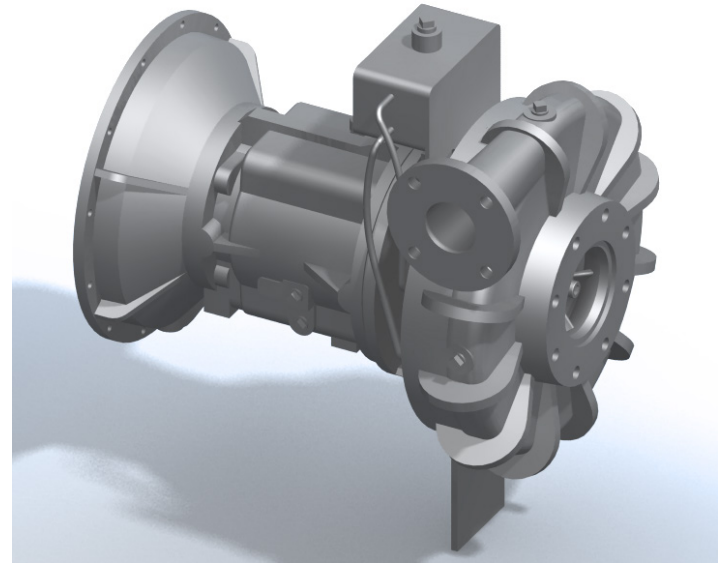
**\*NOW AVAILABLE IN CD4MCu**

**AVAILABLE MOUNTING CONFIGURATIONS**

3HC-F FRAME MOUNT  
3HC-RP-F REDI-PRIME FRAME MOUNT  
3HC-EM ENGINE MOUNT  
3HC-RP-EM REDI-PRIME ENGINE MOUNT  
3HC-VC VERTICAL COUPLED  
3HC-VF VERTICAL FRAME MOUNT  
3HC-CC CLOSE-COUPLED  
3HC-VM VERTICAL CLOSE-COUPLED

**OPERATING LEVELS**

<b>MIN FLOW</b>	100 GPM	23 m <sup>3</sup> /h
<b>MAX FLOW</b>	1070 GPM	243 m <sup>3</sup> /h
<b>DISCHARGE SIZE</b>	3"	76 mm
<b>SUCTION SIZE</b>	6"	152 mm
<b>SOLIDS HANDLING</b>	.5"	12.7 mm
<b>MAX SPEED</b>	2400 RPM	2400 RPM
<b>SHUT-OFF HEAD</b>	480'	146 m
<b>BEP HEAD</b>	440'	134 m
<b>BEP FLOW</b>	929 GPM	211 m <sup>3</sup> /h
<b>BEP PERCENT</b>	72%	72%



A typical picture of the pump is shown. Please contact Cornell Pump Company for further details. All information is approximate and for general guidance only.

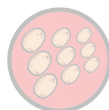
<b>PARTS</b>	<b>STANDARD MATERIAL (ALL IRON)</b>	<b>CD4MCU</b>
<b>WEAR RING</b>	CAST IRON	CD4MCU
<b>IMPELLER</b>	CA6NM STAINLESS STEEL	CD4MCU
<b>VOLUTE</b>	CAST IRON	CD4MCU
<b>SHAFT</b>	STRESSPROOF STEEL	17-4PH
<b>SHAFT SLEEVE</b>	416 STAINLESS STEEL	CD4MCU
<b>MECHANICAL SEAL</b>	TUNGSTEN CARBIDE VS. SILICON CARBIDE	TUNGSTEN CARBIDE VS. SILICON CARBIDE
<b>BEARING FRAME</b>	CAST IRON	CAST IRON

The 3HC pump is designed with Cornell's renowned quality and durability. It features a 3" discharge, 6" suction, and enclosed impeller. Available in All Iron or CD4MCu materials. Cornell's patented Cycloseal® design is standard, with a Type 1 or 2 single mechanical seal with Buna-N elastomers, stainless steel hardware and tungsten carbide vs. silicon carbide seal faces for abrasion resistance.

- Cycloseal sealing system
- Robust construction
- Two-year warranty
- Oversized shaft and bearings
- Optional Redi-Prime™ priming system
- Optional Run-Dry lubrication system



AGRICULTURE



FOOD



INDUSTRIAL



MINING



MUNICIPAL



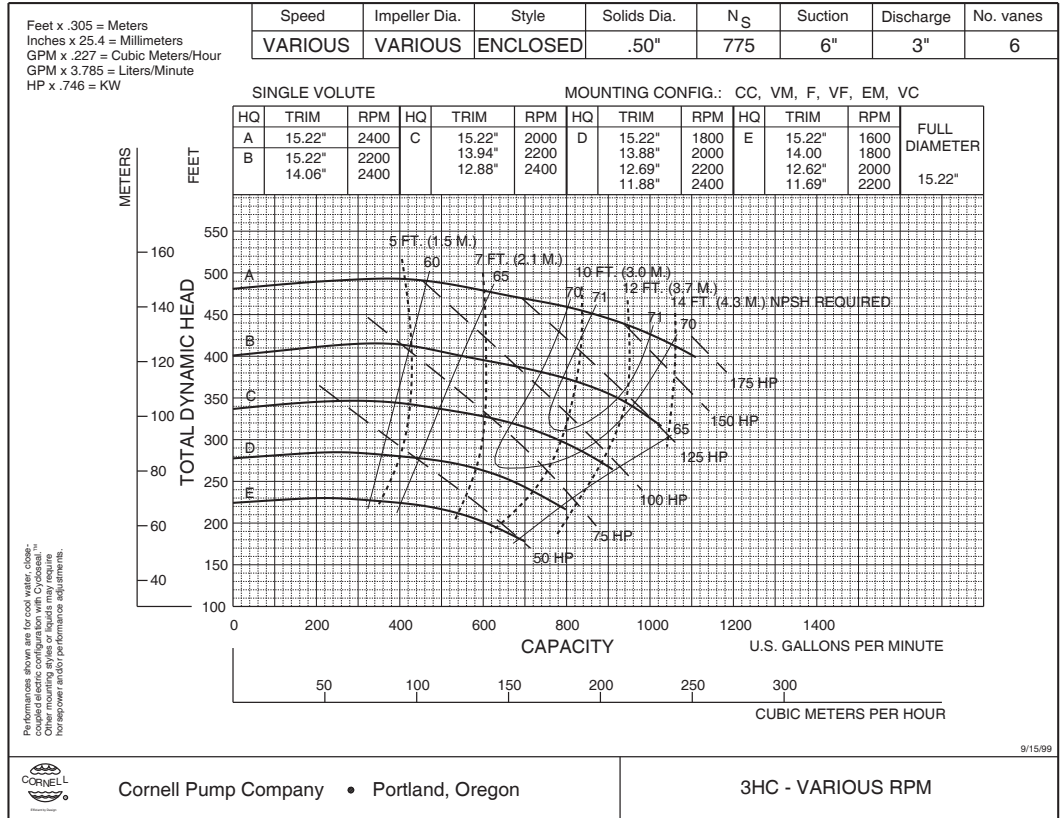
OIL & GAS



REFRIGERATION

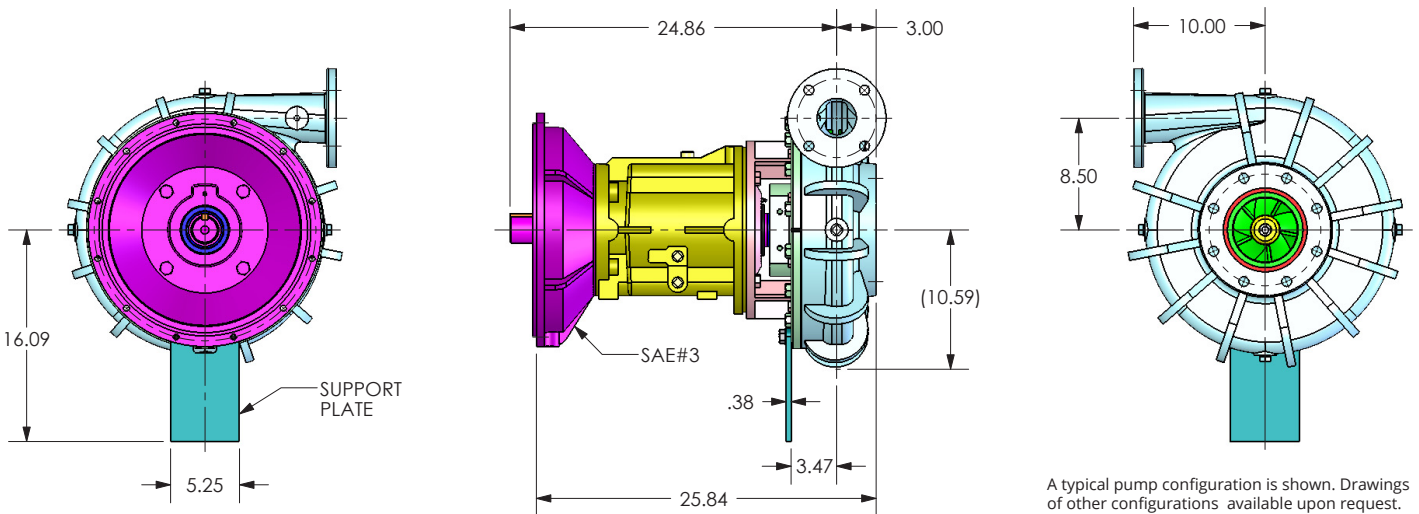


RENTAL



NEW PAGE

3HCVA



DS8STL-140826-P